

JRC Building: A History in Photos

Celebrating the Building Loan Payoff

March 2023

LET'S GO GREEN!

JRC'S GREEN POLICY

RECYCLE
PAPER, ALUMINUM,
GLASS, PLASTIC

NO-IDLING
If you are stopped for
Longer than 30 seconds,
Turn your engine OFF!

CARPOOL
Saves energy and
Builds relationships!

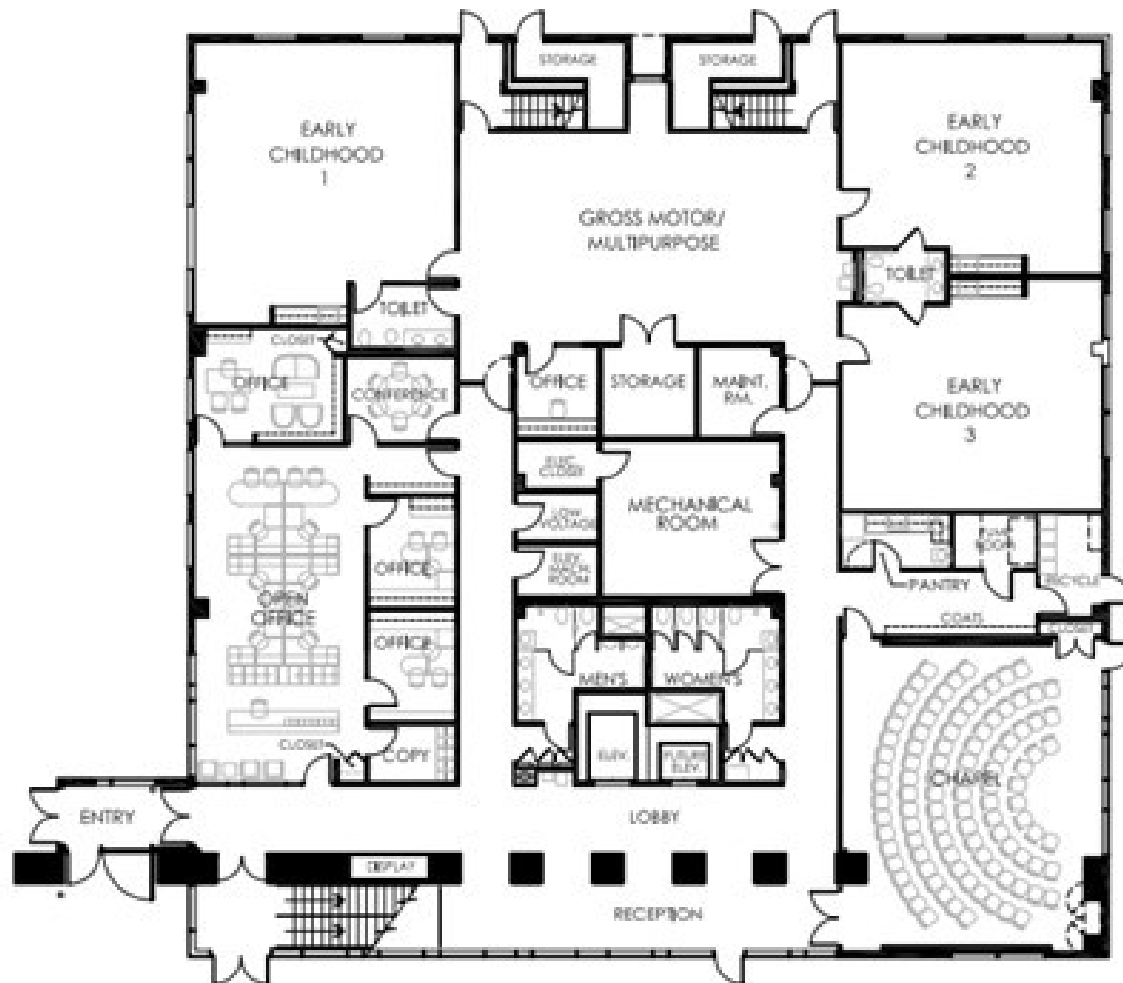
**SAY "NO" TO DISPOSABLE
WATER BOTTLES**
Use a re-usable water bottle
And Refill!

**SAY "NO" TO STYROFOAM,
SAY "POSSIBLY" TO PLASTIC,
SAY "PERHAPS" TO PAPER,
SAY "REGULARY" TO RE-USEABLES!**

PRINT
DOUBLE-SIDED
on recycled paper with
Post consumer waste (PCW)
Content!

**LOW TOXIC,
NON-TOXIC
CLEANERS ONLY!**

**BUY ORGANIC
FOOD In BULK**
whenever possible!

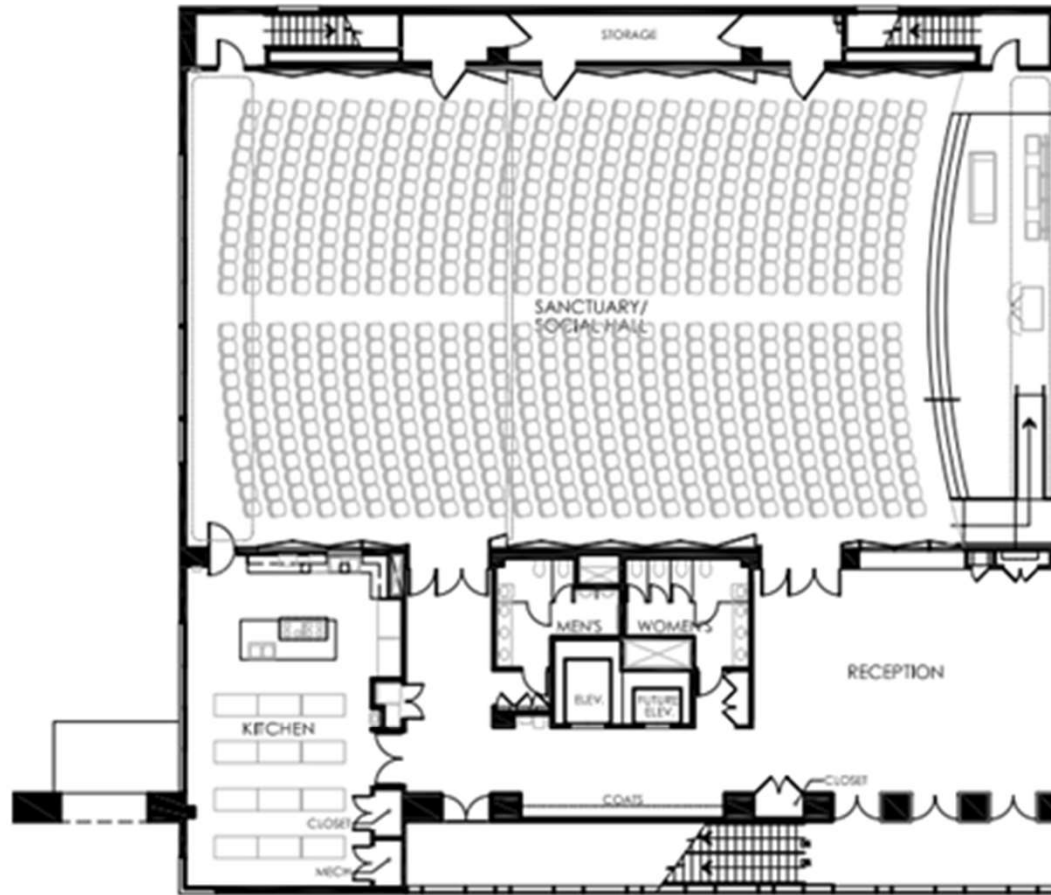




r_barc ross barney architects
 11000 Wilshire Blvd. Suite 400 Los Angeles, CA 90024
 310.204.1000 www.rbarc.com

JRC
 Jewish Reconstructionist Congregation
 JUNE 2007

⊕
 2ND FLOOR PLAN
 GRAPHIC SCALE (1/16"=1'-0")
 0 5 10 20



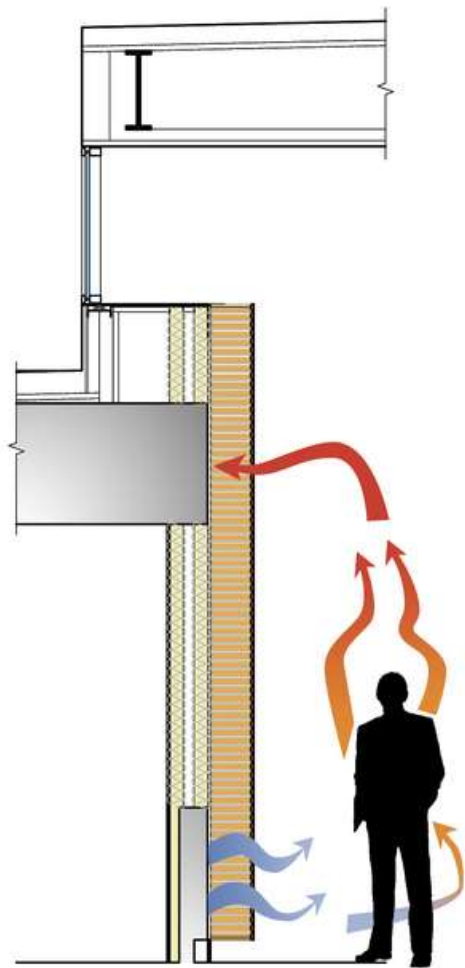
r_barc ross boney architects
 70 West Hubbard Street Chicago Illinois 60610
 (312) 662-0902 (312) 662-0907
 www.rbarc.com

JRC
 Jewish Reconstructionist Congregation
 JUNE 2007

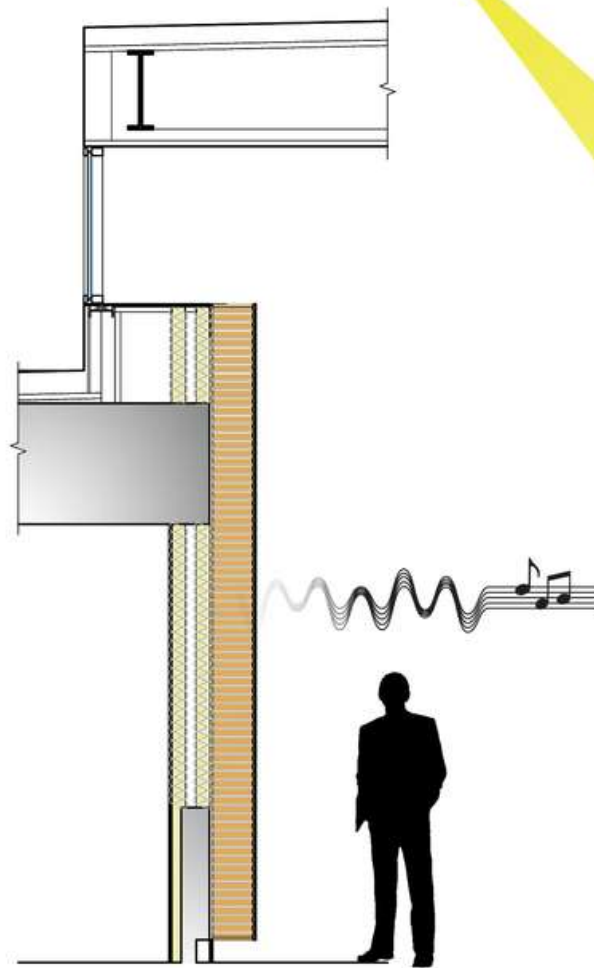
⊕
 3RD FLOOR PLAN
 GRAPHIC SCALE (1/16"=1'-0")
 0 5 10 20



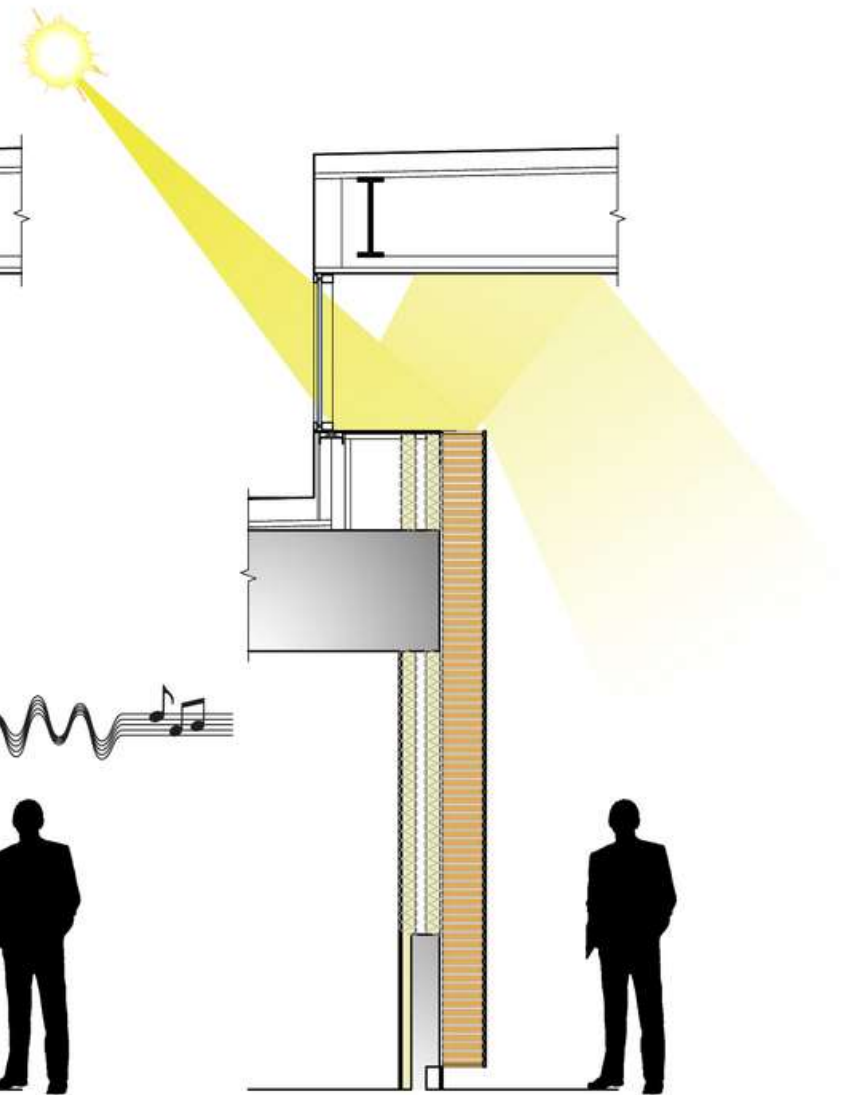
SANCTUARY SLAT WALL SECTIONS



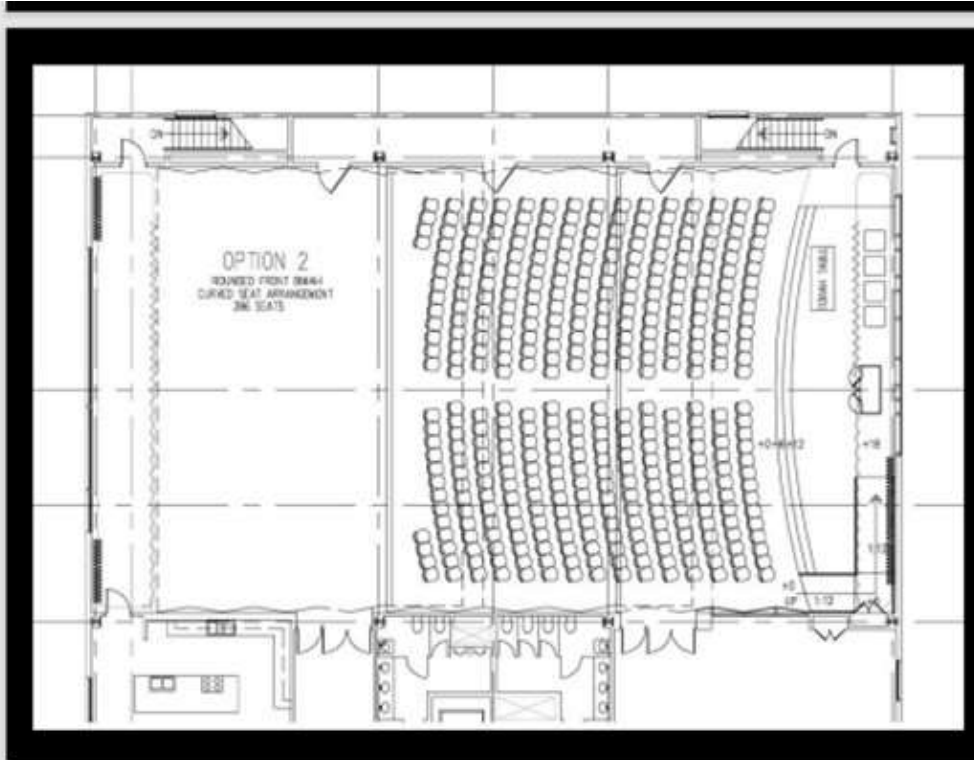
DISPLACEMENT VENTILATION



INTEGRATED ACOUSTICS



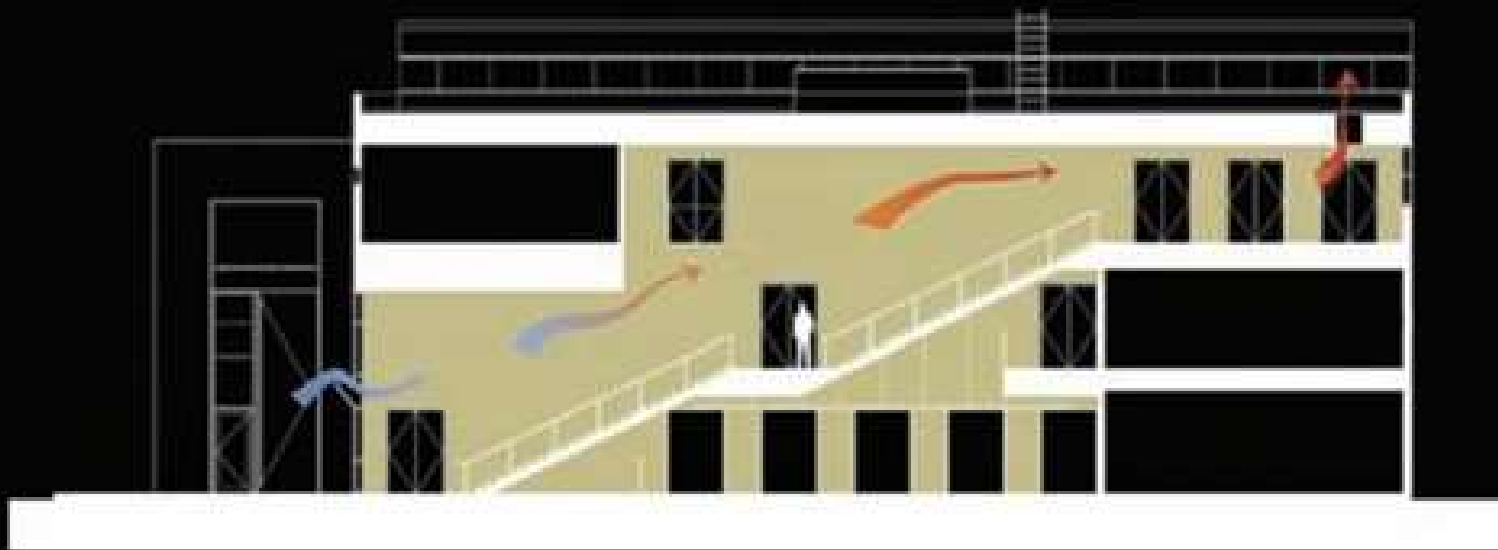
CLERESTORY LIGHT SHELF



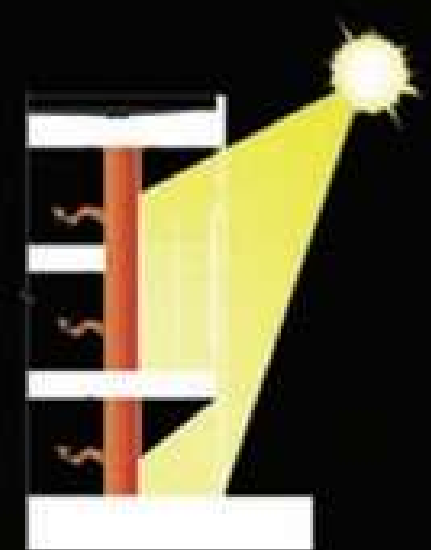
Option 2
Rounded Front Bimah



BUILDING SECTION SOUTH STAIR TRANSITIONAL SPACE

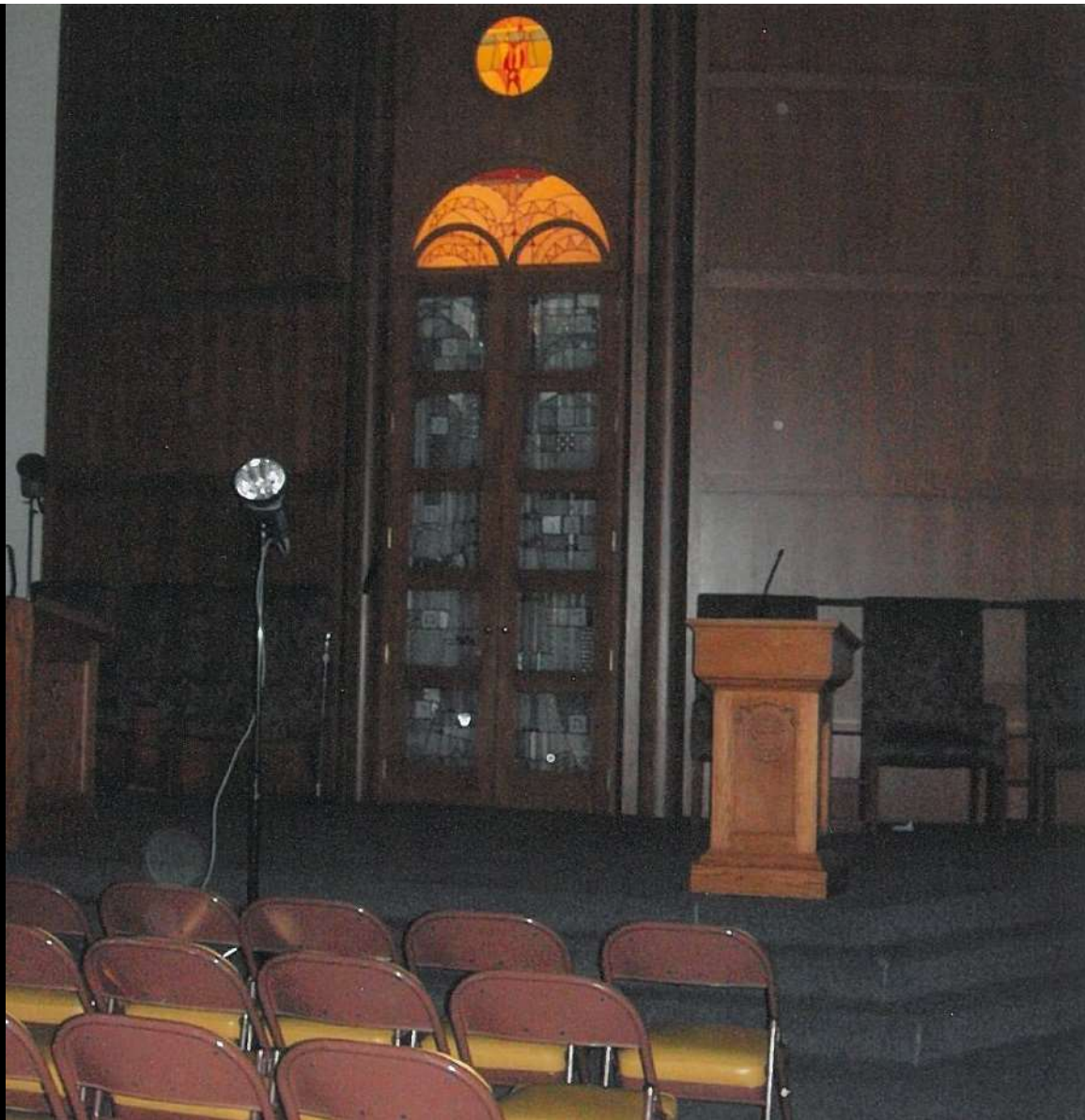


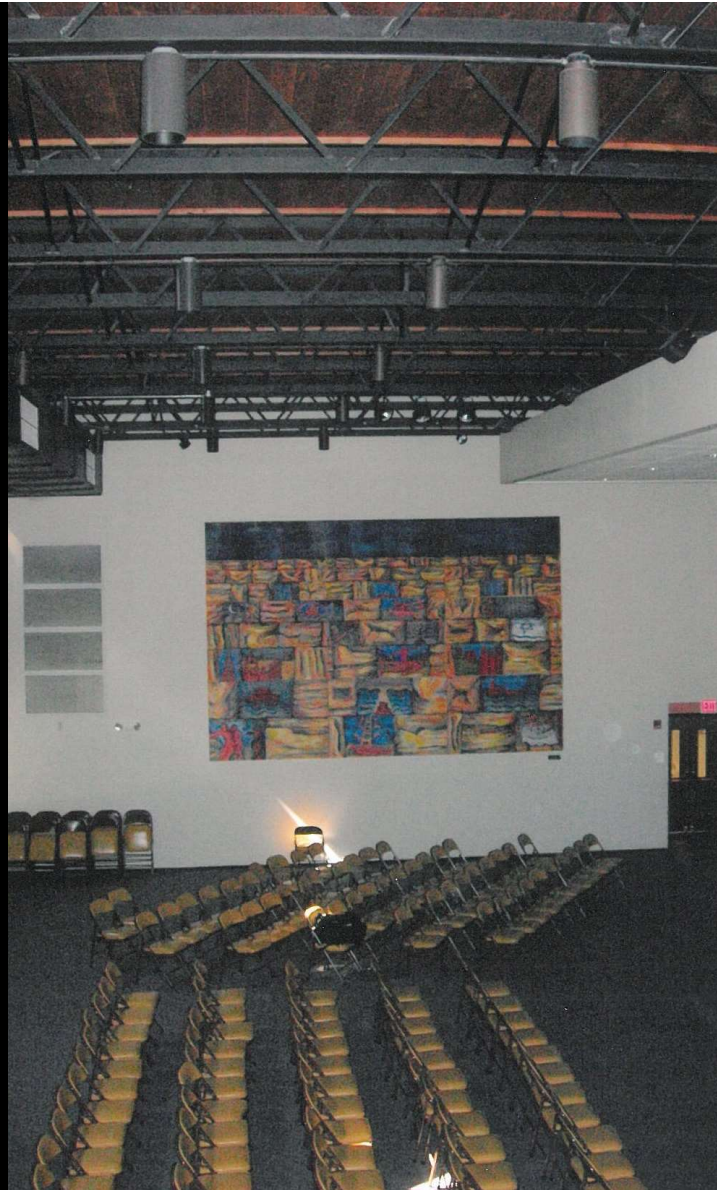
PASSIVE VENTILATION

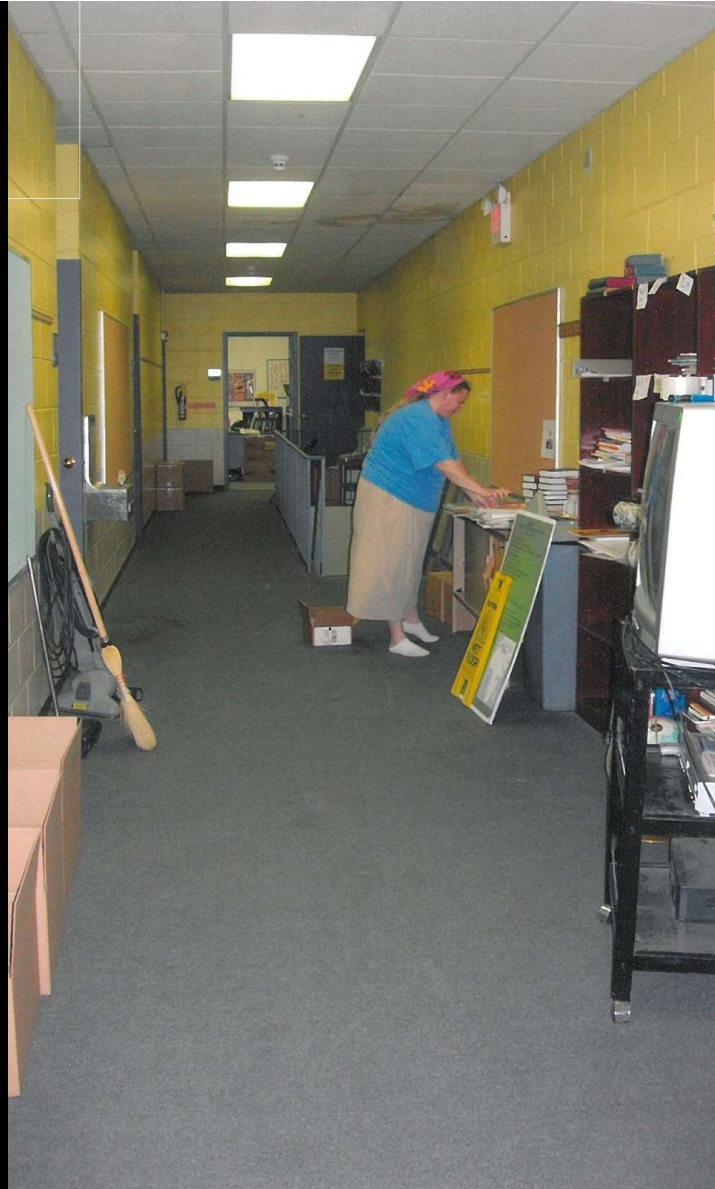


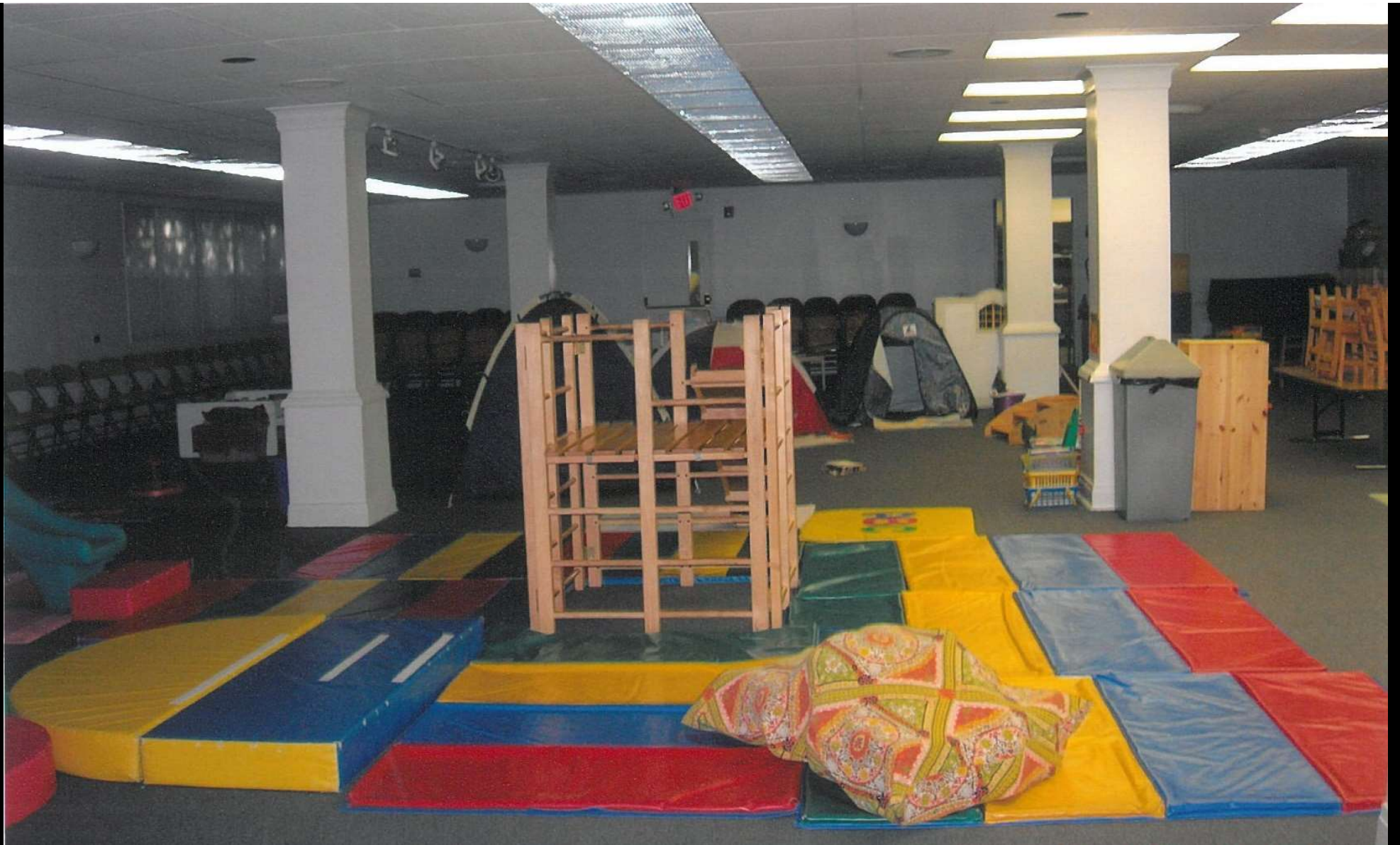
PASSIVE HEAT
ABSORPTION











J.R.C. Building Bash 2006



WRITE ON THE WALLS?

WHAT SHOULD I WRITE ON THE WALLS?

1. WRITE A FOND MEMORY OF JRC
2. DRAW A PICTURE OF YOUR FAMILY
3. DRAW A PICTURE OF YOU
4. DRAW A PICTURE OF YOUR FAVORITE THING TO DO AT JRC
5. SAY WHY YOU LOVE JRC
6. DRAW A PICTURE OF YOUR FAVORITE HOLIDAY
7. WHAT ARE YOU LOOKING FORWARD TO IN THE NEW BUILDING?
8. USE APPROPRIATE AND RESPECTFUL LANGUAGE
9. WHAT ARE YOU LOOKING FORWARD TO IN THE NEW BUILDING?
10. HAVE FUN

Dear JRC,
I'm going to miss you! I can't wait to see the new building!

Love,
Avi



JRC



Small text caption below the painting.













JRC - Re-Construction Committee



Building Bash - June 25, 2006

October-07

Determine the budget and list for material/furniture included in new building
what's needed for coming back to new building (TC & Mike Nolan)

Check with Peterson owners on what furniture/workstation work needs to be done upon
leaving space (Carole)

Oct 13th - Film Event on Transitions

Get together inventory of all objects at Peterson/STBZ [Staff & Joan & Vickie]

Put signage out at Dodge re: coming home [Lisa]

Notify STBZ and Peterson as to dates of our leaving - Mid Jan STBZ? [Alan]

November-07

Nov 4th - AM - Social Action - Env task Force - Living in a Green Building [Carole]

Hand out staff tasks/timelines for move [Joan/Vickie]

Green policies brought to Board [Carole]

Schedule Movers for Dec/Jan [Joan]

Check w/STBZ (in writing) as to stuff that needs to be removed when we move [Bryna]
(Joan talk to Bonnie w/ Y)

Determine pricing and dates for permanent signage [Alan]

January-08

Green Building Cheat Sheet - Contact person on ETF - FAQs on Website (Carole)

Move back to New Building YEAH! (TC)

Install and test operation of new computer system [Bryna w/Neil]

Remove all temporary signage from STBZ [Staff]

Update vendors as to new delivery address (Bryna)

Ensure all essential items have been accounted for - moved, packed, or stored (TC)

Organize help as needed to unpack material and set up in proper locations (TC)

Install Mezuzot as needed [Brant]

Locate old Mezuzot (Joan)

Train staff as needed on new security system - distribute new keys [Bryna]

Ensure new phone system working properly - Train staff as needed on new phones
[Bryna/Elliot]

Train appropriate staff on Heating/AC [Bryna & Mike Nolan]

First service in building mid-January? Jan 13th first Day [Brant] - Open House?

Midweek Luncheon - Thanks for Staff

Update Insurance Coverage (Lisa, Alan, Bryna)

February-08

Friday Night Service led by all those who became Bar/Bat Mitzvah in wilderness?

Follow up with Staff re: any transition issues from move that need to be worked out (j /V)

Open House/Tour for neighbors and local community - Neighborhood Organization?

Transition Committee on site

Tu B'Shevat seder on transition

Volunteer - Thank You Event - Brunch?



Jewish
Reconstructionist
Congregation

בית המדרש
הרפורמטיבי
המבני

JRC *Jewish
Reconstructionist
Congregation*

Interim Home:
Shaare Tikvah B'nai Zion
5800 N. Kimball Avenue
Chicago

*Mikdash
Hebrew Center*



SLICED BACON

WALL TO WALL DISCOVERY

בניד הוזח
בניד הוזח

Young Architects
Leading the Way

THE BOOKS















22.10.2006



















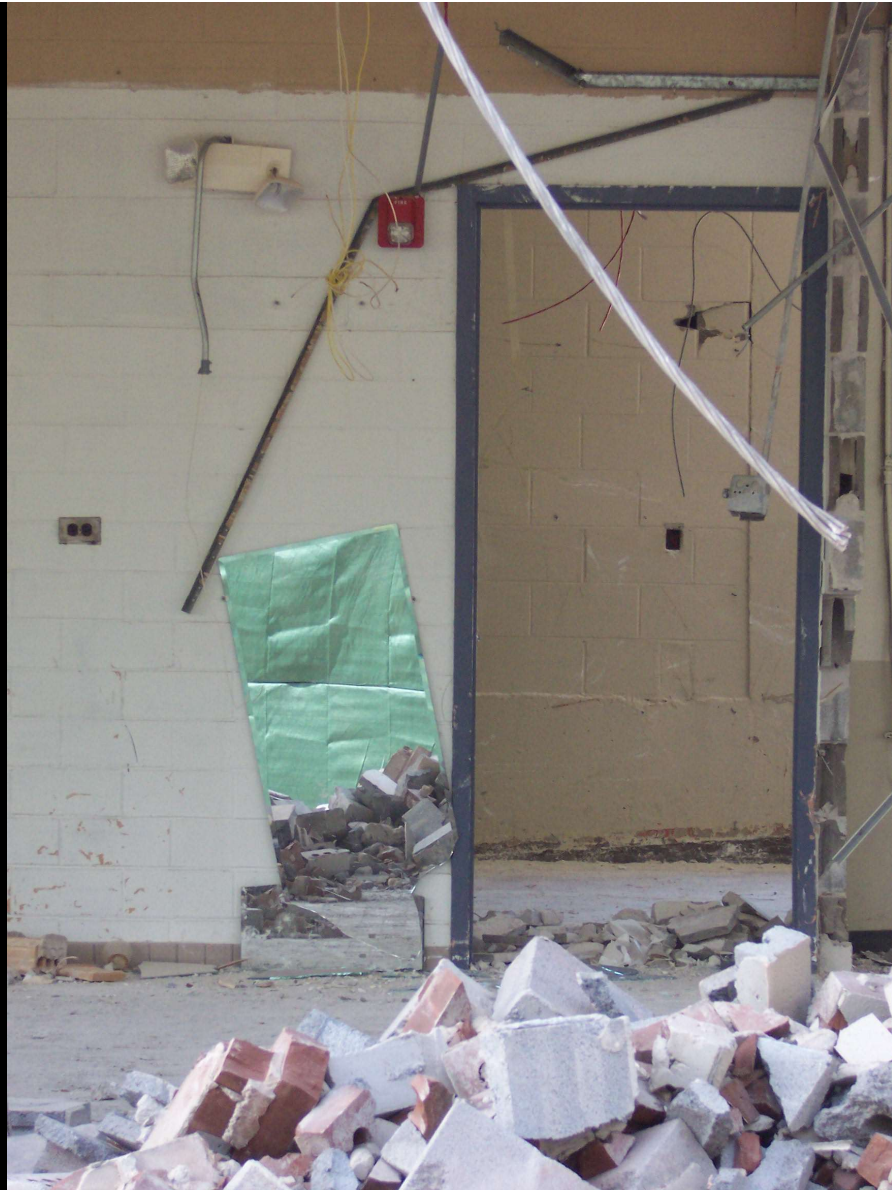
10.22.2006 15:37





*econstructionist
Congregation*



























Then together we brainstormed eighteen spiritual values of our JRC community: God, Judaism, Joy, Prayer, Hope, Respect, Partnership, Song, Tikkun Olam, Community, Study, Freedom, Friendship, Spirit, Learning, Peace, Growth, and Love.



Afterwards, I wrote out the values on separate pieces of paper and each one was placed by the construction crew into a separate caisson shaft to be mixed together with the concrete, becoming a permanent part of JRC's support structure.

Marc Bonnivier, our construction supervisor, just LOVED the idea. He

later mentioned to me his workers were so enthusiastic about it, they each jockeyed for a turn to place a paper slip into the shafts after they were drilled. Needless to say, working with JRC is turning out to be a unexpectedly unique experience for him and his entire crew.

I love the notion that these unseen but powerful pillars for our building will be a permanent support structure to our community in more ways than one.

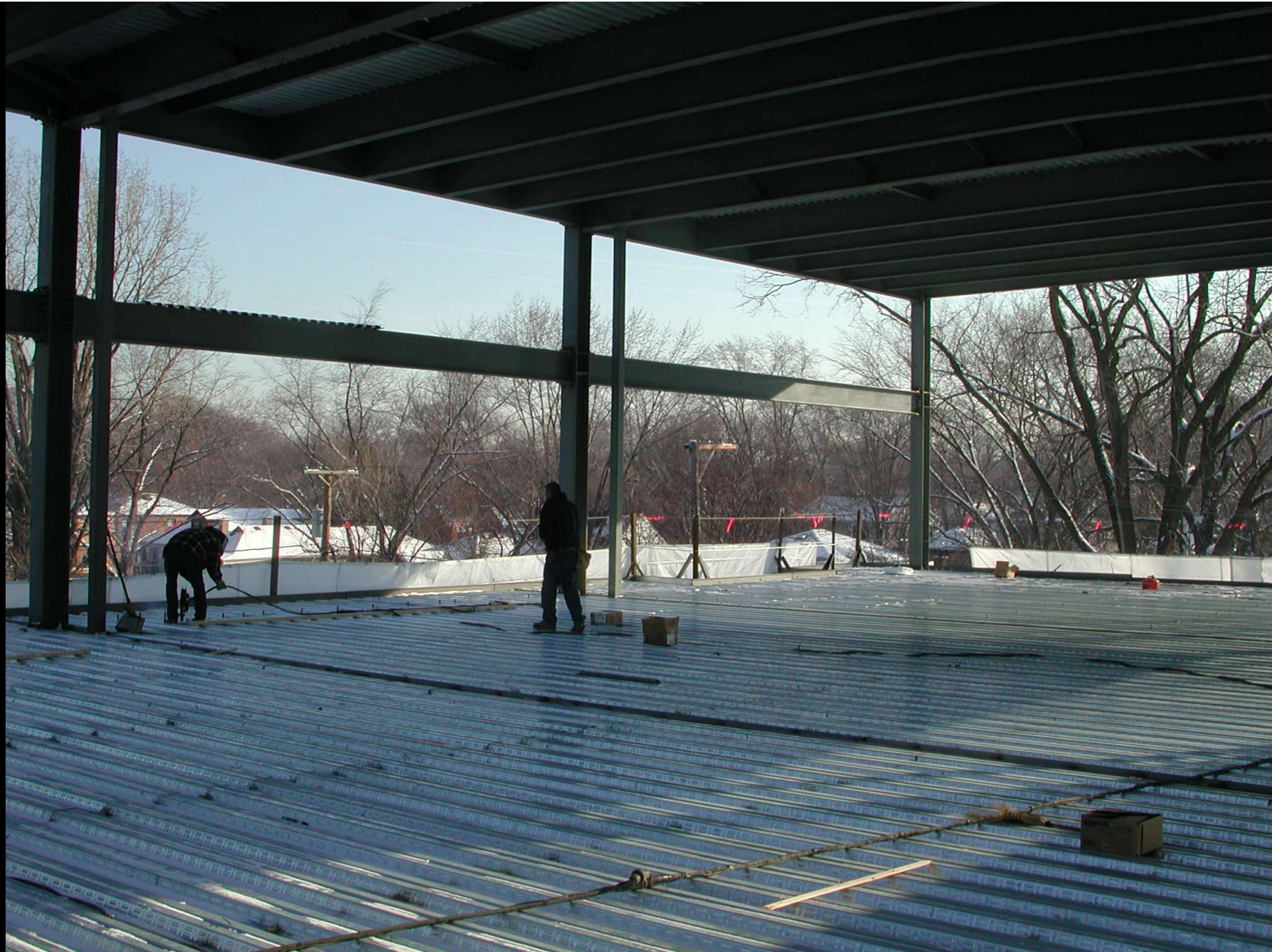




























...School Times in
Scott Pollock
(for Heavy Shtetl +
Aite Rockers - much
music ahead for the
new JRC!)



Beryl Michaels
John Bach

Remember when
first came to
JRC!
Good luck to
the new building!



-Aviva
Feldman
Mazel tov!
-Rob Feldman
Kim Avate



January 21, 2007
2 Street 5767

WOLFE'S OLD STORE
WOLFE'S OLD STORE
WOLFE'S OLD STORE

CORANIE
CORANIE
CORANIE

JULIE DOREMAN
JULIE DOREMAN
JULIE DOREMAN

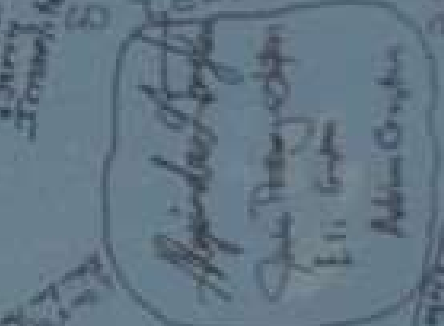


Handwritten notes and scribbles in the upper left quadrant, including the name 'CORANIE' and other illegible text.

Handwritten notes in the center-left area, including 'Gode' and 'WUZ'.

Handwritten notes in the center-right area, including 'MIRIAM' and 'BEAM UP UP AT 0:00'.

Handwritten notes in the upper right quadrant, including 'MIRIAM' and '1.21.07'.



Handwritten notes in the lower right quadrant, including 'S-1 Airport' and 'MIRIAM'.

Handwritten notes in the lower left quadrant, including '(NAC)'.

Handwritten notes in the lower center-left area, including 'I' and 'JRC'.

Handwritten notes in the lower center-right area, including 'MIRIAM' and '1.21.07'.

Handwritten notes in the lower right quadrant, including 'MIRIAM' and '1.21.07'.

Handwritten notes in the lower right quadrant, including 'MIRIAM' and '1.21.07'.

Handwritten notes in the lower right quadrant, including 'MIRIAM' and '1.21.07'.

Handwritten notes in the bottom left corner, including 'MIRIAM' and '1.21.07'.

Handwritten notes in the bottom center-left area, including 'MIRIAM' and '1.21.07'.

Handwritten notes in the bottom center-right area, including 'MIRIAM' and '1.21.07'.

Handwritten notes in the bottom right quadrant, including 'MIRIAM' and '1.21.07'.

Handwritten notes in the bottom right quadrant, including 'MIRIAM' and '1.21.07'.

Handwritten notes in the bottom right corner, including 'MIRIAM' and '1.21.07'.





[Handwritten notes and signatures on a whiteboard]

Jordan
 Winner 2015
 ABR
 Nate
 Zeb
 Helen
 2015
 2016
 2017
 2018
 2019
 2020
 2021
 2022
 2023
 2024
 2025
 2026
 2027
 2028
 2029
 2030
 2031
 2032
 2033
 2034
 2035
 2036
 2037
 2038
 2039
 2040
 2041
 2042
 2043
 2044
 2045
 2046
 2047
 2048
 2049
 2050
 2051
 2052
 2053
 2054
 2055
 2056
 2057
 2058
 2059
 2060
 2061
 2062
 2063
 2064
 2065
 2066
 2067
 2068
 2069
 2070
 2071
 2072
 2073
 2074
 2075
 2076
 2077
 2078
 2079
 2080
 2081
 2082
 2083
 2084
 2085
 2086
 2087
 2088
 2089
 2090
 2091
 2092
 2093
 2094
 2095
 2096
 2097
 2098
 2099
 2100

Miles
 1000
 2000
 3000
 4000
 5000
 6000
 7000
 8000
 9000
 10000

Go Home!
 Linda Kagan
 David Purcell
 1/21/07
 Ann Kagan
 Sharon

May 10 11 AM
 12:00 PM
 1:00 PM
 2:00 PM
 3:00 PM
 4:00 PM
 5:00 PM
 6:00 PM
 7:00 PM
 8:00 PM
 9:00 PM
 10:00 PM
 11:00 PM
 12:00 AM

Gloria
 2015
 2016
 2017
 2018
 2019
 2020
 2021
 2022
 2023
 2024
 2025
 2026
 2027
 2028
 2029
 2030
 2031
 2032
 2033
 2034
 2035
 2036
 2037
 2038
 2039
 2040
 2041
 2042
 2043
 2044
 2045
 2046
 2047
 2048
 2049
 2050
 2051
 2052
 2053
 2054
 2055
 2056
 2057
 2058
 2059
 2060
 2061
 2062
 2063
 2064
 2065
 2066
 2067
 2068
 2069
 2070
 2071
 2072
 2073
 2074
 2075
 2076
 2077
 2078
 2079
 2080
 2081
 2082
 2083
 2084
 2085
 2086
 2087
 2088
 2089
 2090
 2091
 2092
 2093
 2094
 2095
 2096
 2097
 2098
 2099
 2100























































































66-402-2222















IRC's New Home
Lumber
TRUST BANK TRUST

BOOM LIFT S-60

DYNAMIC



































Bulley & Andrews, LLC
Metne Division

1755 W. Armitage Ave.
Chicago, IL 60622
773 35.2433
www.bulley.com

9741



JEWISH RECONSTRUCTIONIST CONGREGATION

Coming Home
jrc
February 2008

דור לדור

DOR L' DOR - GENERATION TO GENERATION



CELEBRATING OUR PAST, BUILDING OUR FUTURE

TOWARDS MAKING Our Dreams a Reality

TRANSITION EVENTS CALENDAR

- | | | |
|------------------------|---------------------------|--|
| April 6 | 6:00pm | Early Childhood Seder A family model seder with light dinner, songs, prayers, and stories. RSVP JRC office. |
| April 8 | 7:00pm | Leave the Leaven and Dance the Chametz Away: Celebrate Transitions! Join in the fun as we enjoy a potluck dinner followed by dancing to the music of Heavy Shtetl and the Alte Rockers. RSVP JRC office. |
| April 30 | 9:15 & 11:15am | Congregational Beit Café • An informational meeting on the Mishkan and our transition |
| May 1 | | Packing parties—Library • Parties begin. |
| May 14 | 10:00am | Book Group: "Weeping Susannah," a book by Alona Kimchi; a book highlighting the theme of transition from neurosis to mental health. Contact Jill Berkeley. |
| | 11:30am | Film Forum: "Nowhere in Africa" • An Academy Award winning film about a Jewish woman's journey from Nazi Germany to Africa and the changes in her life and marriage. Contact Jill Deheeger. |
| May 20 | 12:15pm | Luncheon with Migdosh el Hagro, our congregational neighbors with whom we have shared our building, our spiritual space, and our kitchens! RSVP JRC office. |
| May 21 | | Religious School, last day Join in wishing JRC a wonderful transition and put a transition wish in our western wall. |
| May 22 | | Packing parties—Religious School classrooms • Parties begin. |
| May 30 | | Packing parties—EC school classrooms and Religious School offices Packing parties begin. |
| June 5 | | Packing parties—EC storage and lobby area • Parties begin. |
| June 8 | 8:00pm | "Born to Kvetch" a fun filled program about Yiddish as a traveling language presented by Author Michael Wex |
| June 12 | | Packing parties—Rabbi and General Office • Parties begin. |
| June 19 | | Packing parties—EC office • Parties begin. |
| June 23 | | Packing parties—Cantor office • Parties begin. |
| June 25 | | Shacharit Service, our last at 303 Dodge, concluding with the transport of our Torahs to STBZ |
| | Afternoon | Garage Sale and Auction • Buy a piece of history from JRC and leave a winner! |
| | Evening | Building Bash • Celebrate with fun, food, music and more as we say goodbye to our building and look forward to our future! |
| July 15 | | Havdalah welcome to our interim spiritual home, STBZ Join the congregation in prayer, song, and sweets. Our first service at STBZ! |
| September 18–21 | | Open House at our interim office space. Pick up apples and honey for a sweet transition year. |



















































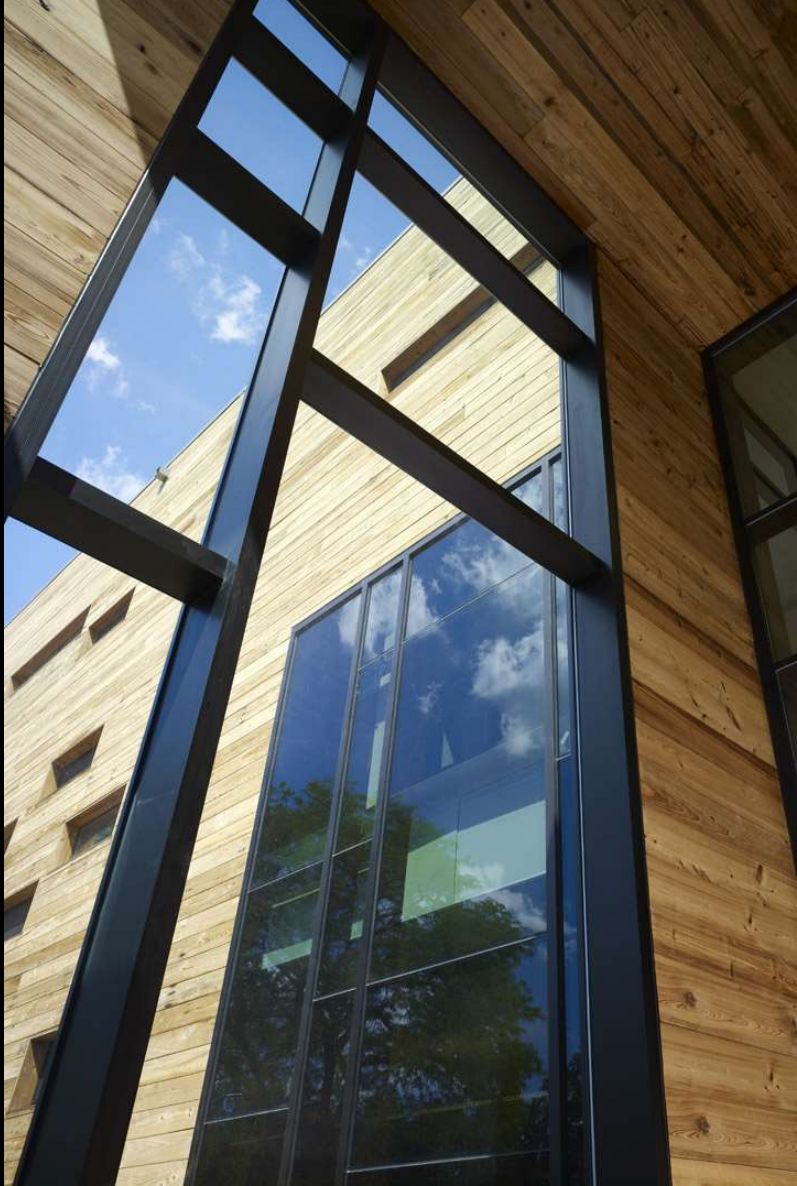


JEWISH RECONSTRUCTIONIST CONGREGATION

EXIT ONLY









































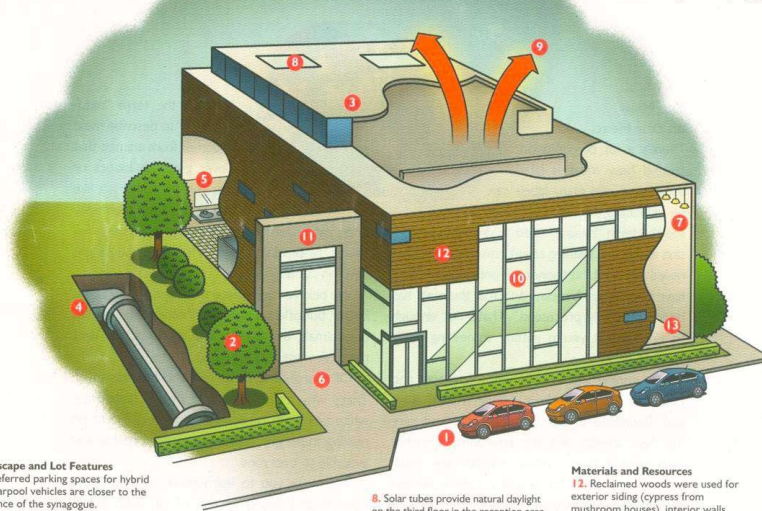


Blessed Are the Green at Heart

How one North Shore synagogue is LEEDing the way to a more energy-efficient future

It's an age-old tale, really. Families expand. A home once considered spacious begins to feel cramped. Renovations once considered luxuries turn into necessities. But the dwelling in question here — the Jewish Reconstructionist Synagogue in Evanston — happened to be the home of a progressive congregation (JRC) with a big social conscience and a growing, wondrously active, multi-generational membership. The structure had to go, but the notion of “stewardship” — that we are all caretakers for the world's resources — prompted JRC to build a home that would be suitable, spiritual and sustainable. “We wanted to go as green as we could and set our sights on LEED platinum,” says Alan Saposnik, JRC's past president and the building's

project manager. LEED is shorthand for the U.S. Green Building Council (USGBC) Leadership in Energy and Environmental Design rating system, platinum being the highest level attainable. The congregation hired the Chicago firm Ross Barney Architects to design and execute the project, which resulted in this compact structure with ambitious intentions. Thanks to imaginative planning, a need for 42,000 square feet has been compressed into 32,000 feet of flexible, convertible and (most importantly) eco-friendly space. The congregation is awaiting its rating from the USGBC and “expects to get platinum, or at the very least gold, sometime in the next six months,” notes Saposnik. Below, an in-depth look at the North Shore's greenest synagogue.



Landscaping and Lot Features

1. Preferred parking spaces for hybrid and carpool vehicles are closer to the entrance of the synagogue.

2. Landscaping features native or adapted vegetation and plants recycled from the original lot.

3. A reflective roof offsets heat to keep the building cooler.

4. A storm-water-detention system that uses a specially engineered pipe eases the impact of storm water on the environment and municipal system.

5. Low-consumption urinals and water closets with dual-flush toilets use less

water, while the low-flow metered sinks conserve even more.

6. Certificates for wind power (to promote its generation elsewhere) reduce the building's carbon footprint.

7. TS fluorescent lighting throughout the building uses less electricity. Dual-switched lamping allows one tube to be shut off in two-tube fluorescent fixtures, while occupancy sensors control artificial lighting in every room.

8. Solar tubes provide natural daylight on the third floor in the reception area and kitchen.

Indoor Environmental Quality

9. Displacement ventilation in the sanctuary delivers air at the floor level to wash over occupants instead of heating the entire 18-foot-high room.

10. Access to daylight and outside views exists in over 90 percent of the spaces thanks to plentiful fenestration.

11. No- or low-VOC (Volatile Organic Compounds) emitting building materials include paints, sealants, composite woods, adhesives and carpets.

Materials and Resources

12. Reclaimed woods were used for exterior siding (cypress from mushroom houses), interior walls (cypress), finish floor (black walnut from downed Chicago Park District trees) and a ceremonial door (on-site crimson maples displaced by the new structure were milled into the building's monumental door).

13. Carpeting in the office areas is made from bio-based hybrid yarn, while the polished concrete floors everywhere else are 15 percent recovered fly ash. Built-in cabinets and shelving are made of Dakota burl, an engineered fiberboard made from sunflower-seed husks. —Lisa Skolnik



Presented to
Michael Nolan
In Recognition and Appreciation for
Bringing us Home!
Given this 2nd day of **November**, 2008
Corresponding to
the 1st day of **June**, 2008
at **180 2nd Delaware Avenue**

May you go from strength to strength, including
the fulfillment of all your worthy hopes and prayers.

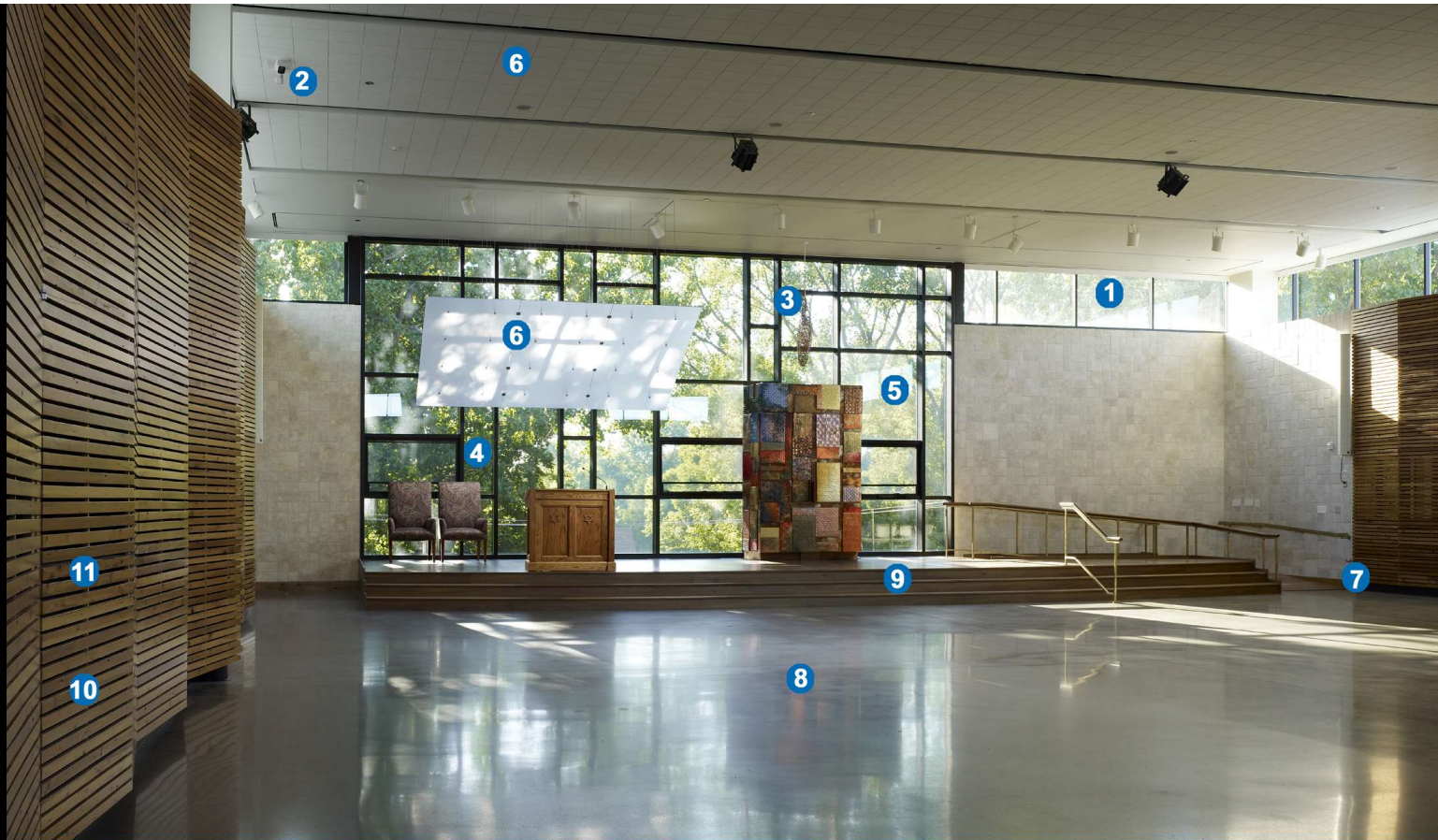
That which brings honor to the donor and to us here!

Presented to
Alan Szczeniuk
In Recognition and Appreciation for
Bringing us Home!
Given this 2nd day of **November**, 2008
Corresponding to
the 1st day of **June**, 2008
at **180 2nd Delaware Avenue**

May you go from strength to strength, including
the fulfillment of all your worthy hopes and prayers.

That which brings honor to the donor and to us here!





SUSTAINABLE STRATEGIES

1. Access to daylight and views for over 90% of the spaces.
2. Dimming and photocell controls for maximizing daylighting.
3. Eternal light is solar powered.
4. Operable windows in all spaces for option of natural ventilation.
5. Spectrally selective and low emissivity glazing used to reduce heat load and harmful UV rays.
6. Sound baffle and ceiling tiles made from recycled materials.
7. Low VOC emitting materials.
8. Polished concrete floor eliminates need for floor covering material, while providing a beautiful, low-maintenance and durable floor. Concrete uses recycled fly-ash in mix.
9. Bimah flooring milled from downed Chicago Park District black walnut trees.
10. Displacement ventilation system used in Sanctuary.
11. Reclaimed wood from mushroom houses used for interior slat walls. Slat walls serve to hide ventilation system, while providing acoustical paneling.

ross barney architects

JEWISH RECONSTRUCTIONIST CONGREGATION



SUSTAINABLE STRATEGIES

1. Reflective roof mitigates heat island effect and keeps building cooler.
2. Stormwater detention system eases the impact of storm water on the environment and municipal system.
3. Landscaped with native and adapted plants, included transplants from the original landscaping. No permanent irrigation used for landscaping.
4. Exterior light fixtures have full cut-off optics to mitigate light pollution.
5. Access to daylight and views for over 90% of the spaces.
6. Operable windows in all spaces for option of natural ventilation.
7. Spectrally selective and low emissivity glazing used to reduce heat load and harmful UV rays.
8. Ceremonial door cladding milled from on-site crimson maple trees that were displaced due to new construction.
9. Reclaimed wood from mushroom houses used for exterior siding.
10. Gabion site walls made from locally demolished brick, concrete, and limestone.

ross barney architects



JRC BUILDING - LEED PLATINUM CERTIFIED AIA COTE TOP TEN GREEN PROJECT

JRC's commitment to Tikkun Olam – Hebrew for “repairing the world” – informed the design of the new 31,600 sf synagogue. The first house of worship to achieve LEED Platinum required a holistic approach to sustainable strategies.

The solution, a precious wooden box, is a visual testament to these values. The wood cladding is recycled cypress harvested from demolished barns. The building makes a sustainable transition by using existing foundations and demolition spoils as engineered fill. Trees that could not be preserved were harvested for use within the building. Construction waste was placed in gabions and used to create site features. 40% of materials are regionally manufactured with Jerusalem Stone as the deliberate exception. The Jerusalem stone wall, representing less than 1% of the modest \$230/sf cost, was included for its spiritual connection and anchors the box to create a baseline for all activities. The processional stair outside the wall provides a meaningful and eventful transition between spaces.

Offices, early childhood program, and chapel occupy the first floor; religious school and library are on the second floor; the sanctuary, social hall and kitchen are on the third floor, a strategy that allowed cost effective construction of high volume space for the sanctuary.















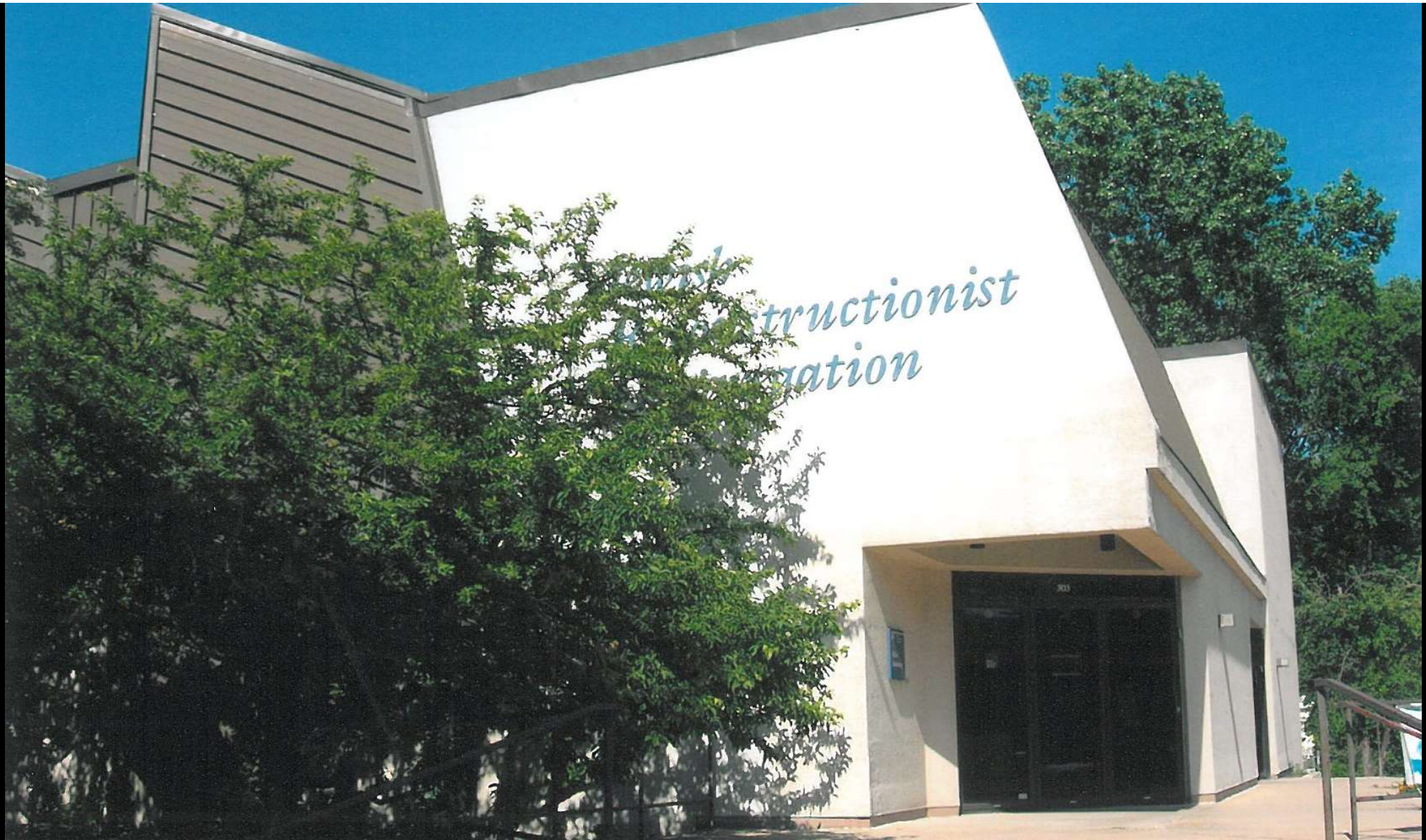












Constructionist
Organization







000,000



\$ 6,250,000

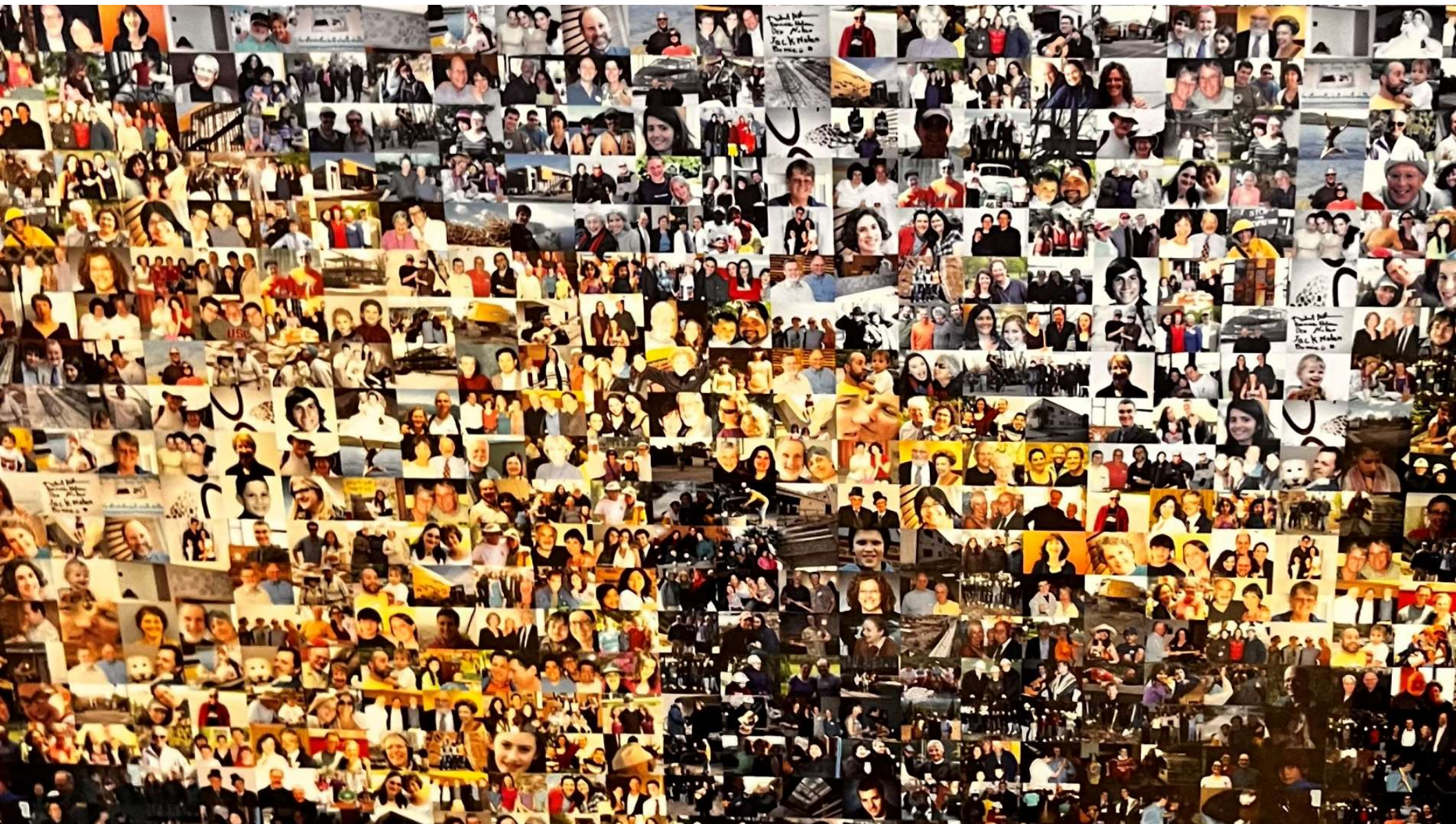


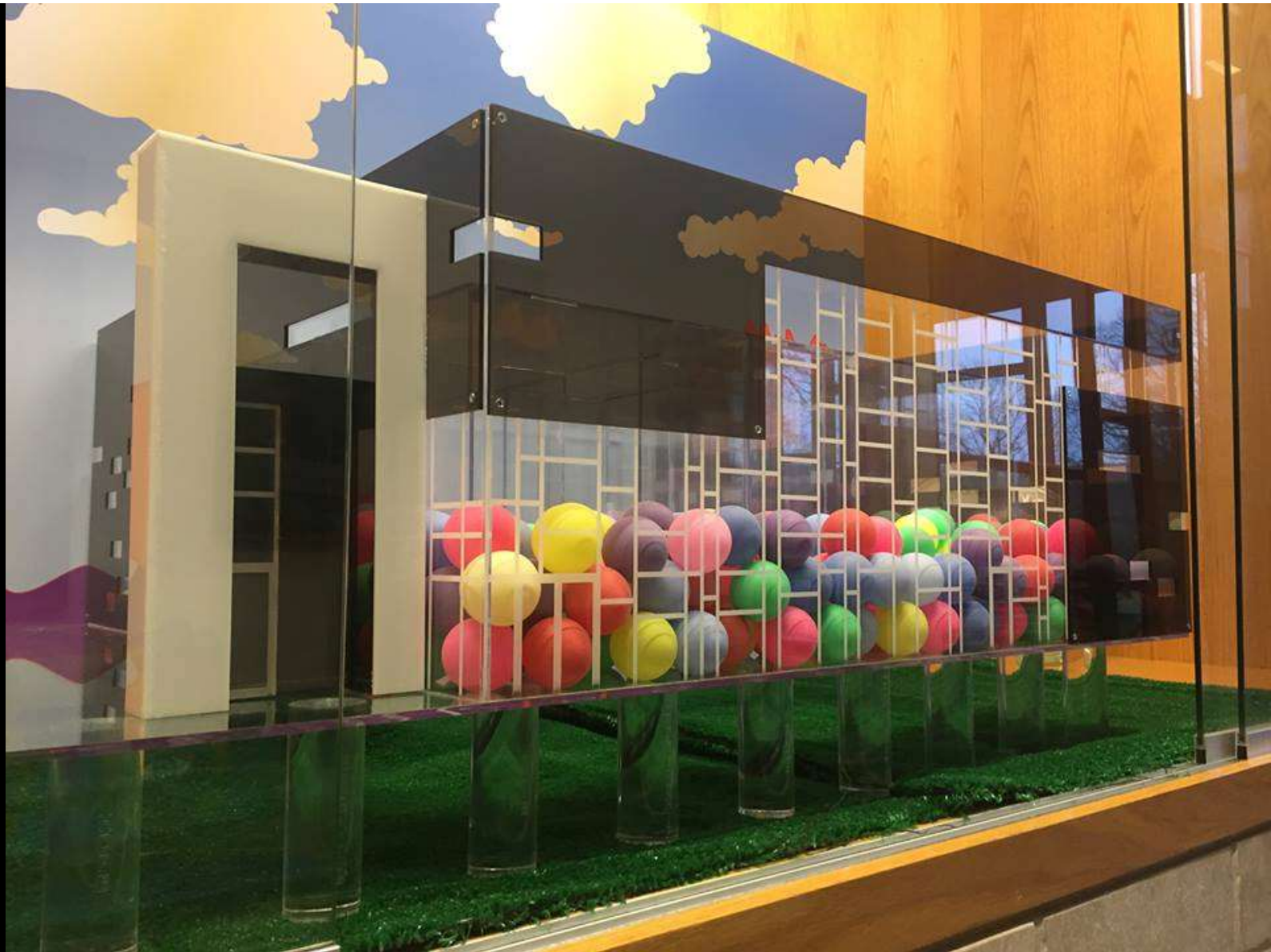
\$ 6,500,000



The Faces of JRC: The Builders

In gratitude to the JRC families who contributed to the first phase of the capital campaign







Pillars Of Chai

JRC's Campaign for the Future

WE DID IT!

Let's Celebrate





zoom

DME

We Reimagined What Could Be. jrc

f LIVE

Black Lives Matter

The Great JRC Cookoff Clergy vs Congregant!

FRESH MOUNTAIN

BUILDING COUNCIL

